



GlasSpace

The architects choice



Conservatree

Looking good. Doing good



GlasSpace - Architectural Glass and Structural Glazing Specialists

The beauty of structural glass is its ability to create completely frameless glass installations that blend and compliment the built environment.

GlasSpace work with Architects and Designers and are award winners for glass extensions, glass staircases, structural glass solutions and a whole lot more.

Glass extensions and frameless glass structures are part of modern Architecture and allow the inside and outside space to become one with finelines and clear open spaces.

Working with the leaders in the glass industry utilising the latest specifications of low e-thermal coating and solar control, your GlasSpace is guaranteed to exceed the rigorous new heat efficiency regulations and remain comfortably warm even in the most extreme conditions. The technology used means that you can keep the internal temperature 'just-right' at all times - no more 'too hot' in the summer and 'too cold' in the winter.

SunGuard®

Guardian's SunGuard® High-performance architectural glass that helps architects and designers Build with Light. Our range of glass products combine solar control, light transmission, and low solar heat gain properties with a range of colours and appearances to suit any application.



St James Square London

Built on the back of a four-story town house in London. St James represents all the features that make up a frameless glass extension while creating the wow factor.

South facing this glass structure incorporates the latest in Solar controlled glass. Keeping the temperature all year round not too hot and not too cold.

GlasSpace designers and specifiers work hard to create spaces that are at the cutting edge of design. Fine - lines and large areas of structural glass that connect the inside and outside space.

An extra feature was a glass floor that flooded light into a basement wine cellar also creating a dramatic entrance into the kitchen from the patio area.

As featured in

**GRAND
DESIGNS**



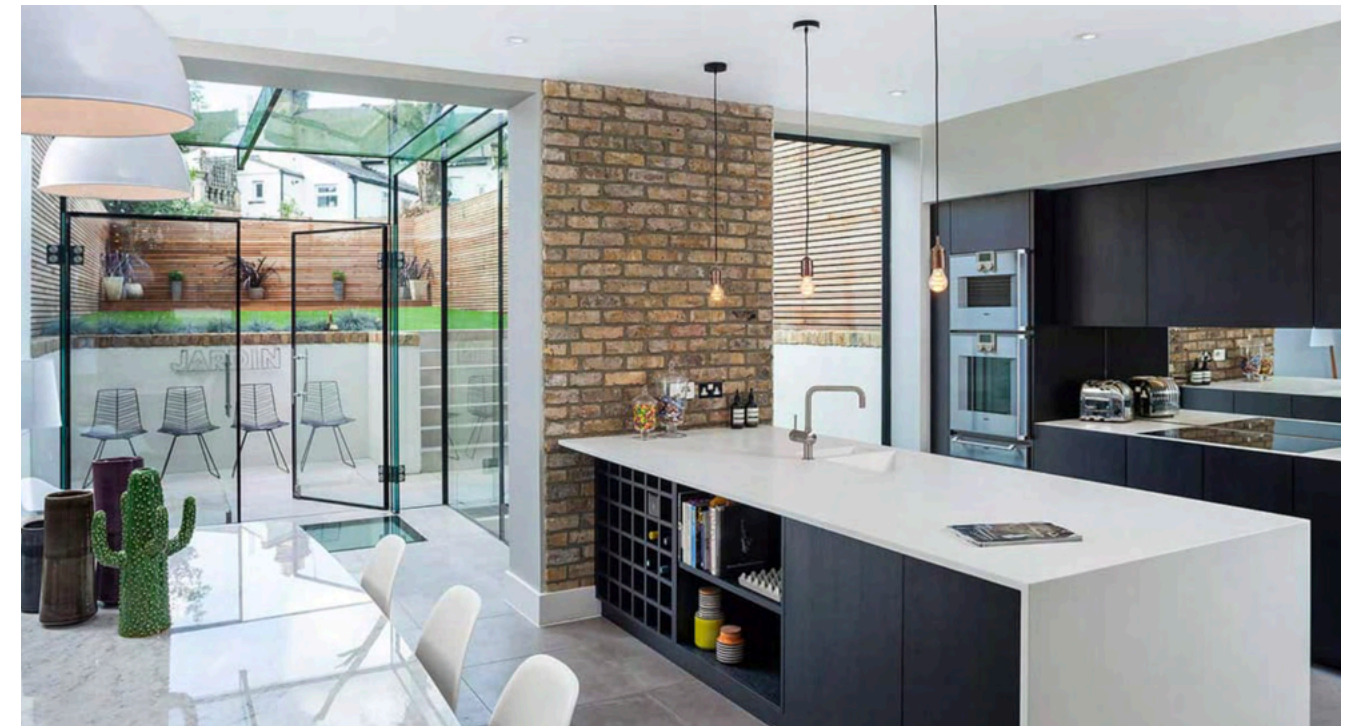
Transparent solar protection

Specified for the walls and roof solar control glass is to optimise the ratio between light transmission and solar factor with high thermal performance. Where natural daylight needs to be maximised while reflecting the optimum amount of solar heat away from the glass.

SunGuard®

High-performance architectural glass that helps architects and designers Build with Light.

- GlasSpace Infiniti Fineline hinged door
- Laminated toughened Low Iron clear glass beam
- Triple laminated structural glass floor
- Bespoke stainless-steel fittings





The Glass House

Entitled 'The Glass House' this renovation and extension plays on the contrast between light and dark and injects a new lease of life into what was once an unoccupied and poorly maintained manor house in Winchester. The design makes best use of the existing structure, whilst making minimal changes for the greatest benefit. The North West Elevation which forms the approach to the property remains largely unchanged to preserve the original character of the building.



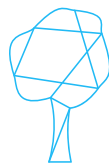


To the rear the existing single storey structure has been increased to be in line with the main property and to retain the existing footprint of the building. This, along with a small single-storey extension to the rear of the westerly side, forms a semi-courtyard space enclosed in glass, which opens up onto the garden. The secondary spaces of this glass enclosure provide contrasting environments, providing the occupant with a variety of living space and emphasising the openness of the kitchen to the garden.

Producing Double glazed units using Low iron glass and solar controlled glass gives super clarity while reflecting most of the sun's harmful rays. GlasSpace works at the forefront of glass technology creating all year round comfortable environments.

Glass balustrades and floating stairs create new finished structures that breathe new life into this former manor house blending old and new with timeless ease.





Conservatree

Looking good. Doing good

GlasSpace is a company that want to give back

In 2018 Glasspace set goals on how to decrease its carbon footprint and help the future environmental economy.

Working and collaborating with other sustainable ventures Glasspaces Conserve-tree was born donating money from the revenue we generate in supplying you carbon energy efficient buildings you help us help Avon Trees buy land and plant permanent forests.

Our goal with Avon trees is carbon sequestration improved biodiversity, natural flood management and creating green spaces for public use.

With the first purchase, we will be protecting ancient forest and creating 20 acres of new woodland, through replanting and rewilding.

Please help us plant thousands of trees in the region. We have lost all most all our forests we need lots more, we will help you be part of this You can also donate your support visit: www.avonneedtrees.org.uk/donate follow Avon trees on Facebook/twitter or Instagram every £2.50 buys another square metre of land we can regenerate with trees and wildlife.

Our carbon budget: It's critical

The Intergovernmental Panel on Climate Change (IPCC) 1.5 degrees report tells us that in January 2018 we had a 'carbon budget' of only 420 gigatonnes, a tonnage of greenhouse gases that if emitted, will bring global temperatures to an average of 1.5°C.

Above 1.5°C, scientists tell us that our ability to control what happens to our climate will be extremely limited.

This gives us (in summer 2019) approximately 8.5 years. To avoid going over 1.5°C we must reach carbon neutrality within that time. Our emissions from fossil fuel combustion, cement production and land use must stop, or be cancelled out by locking equal amounts, in real time, into our 'carbon sinks' – our soil and trees.

Why use trees to off-set?

The wonderful thing about trees is that they take CO₂ from the air to build their roots and branches – and this carbon is then locked away for the lifetime of the tree. The Forestry Commission calculates that the average hectare of woodland in the UK sequesters 800 tonnes of CO₂ in biomass over its life-time.

However, the protected soil beneath the trees is even more important. Soil carbon can be three to four times the carbon actually in the trees, added to every autumn when the leaves drop.

We need more trees in the UK

The UK is the most deforested country in Europe, with just 13% cover compared to the European average of 37%.



More ground-breaking innovations from GlasSpace

Sat on a hill side near Penzance, The Grange needed a twist of contemporary living as an addition to the existing family home.

The brief was to construct a multi-level clear structure that opened onto the landscaped hill side, which formed the family garden. Access to the garden



with the largest seamless opening was the challenge to be overcome. A corner opening frameless structure and innovation in glass was required to achieve the client's dreams, Glasspace designers and structural engineers created a canter levered glass corner solution incorporating Glasspace Infiniti Finline sliding doors.

Glass Bridge and Office Fit Out in Chiswick, London

GlasSpace & Malishev Engineers designed, manufactured and installed a glass bridge as part of an office refurbishment to link two buildings to create more office space.

Over size solar controlled double-glazed units were supported on a glass floor as well as toughened laminated glass beams bonded into place with structural silicone.

Collaborating with Malishev Engineers we create high quality structural designs that deliver the best quality and value for our clients.

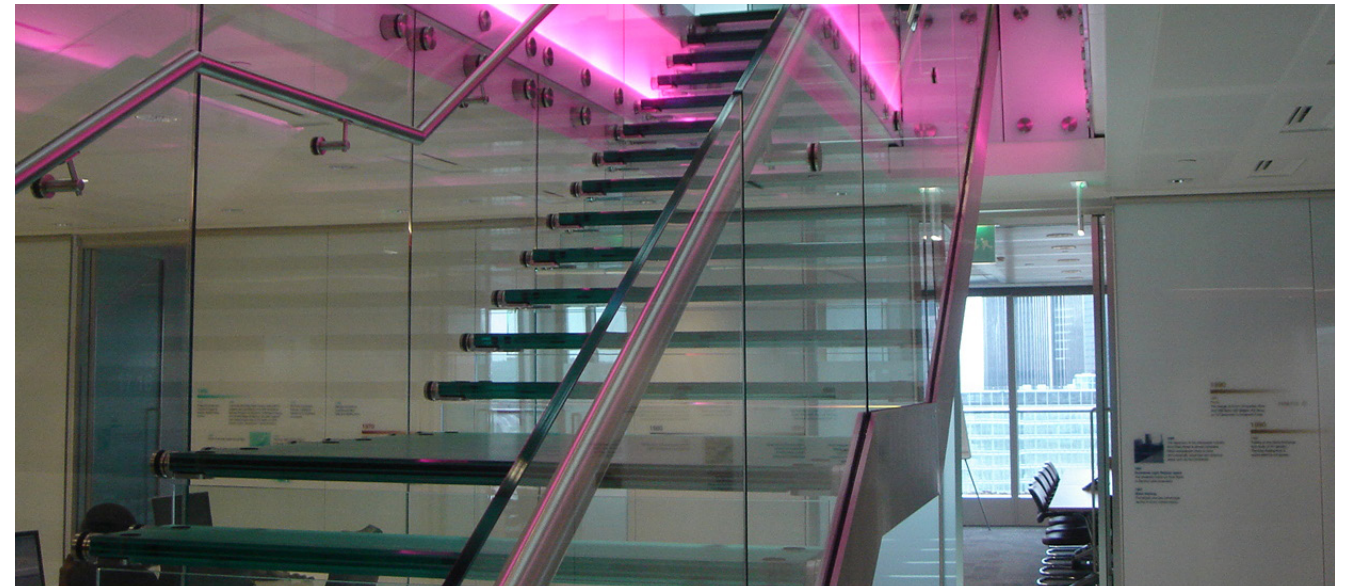
Please copy our video link below:
<https://youtu.be/EBfbBA7hxxk>



Working on the 18th floor we were asked to create a clear single-story stair solution that allowed light to travel to all areas.

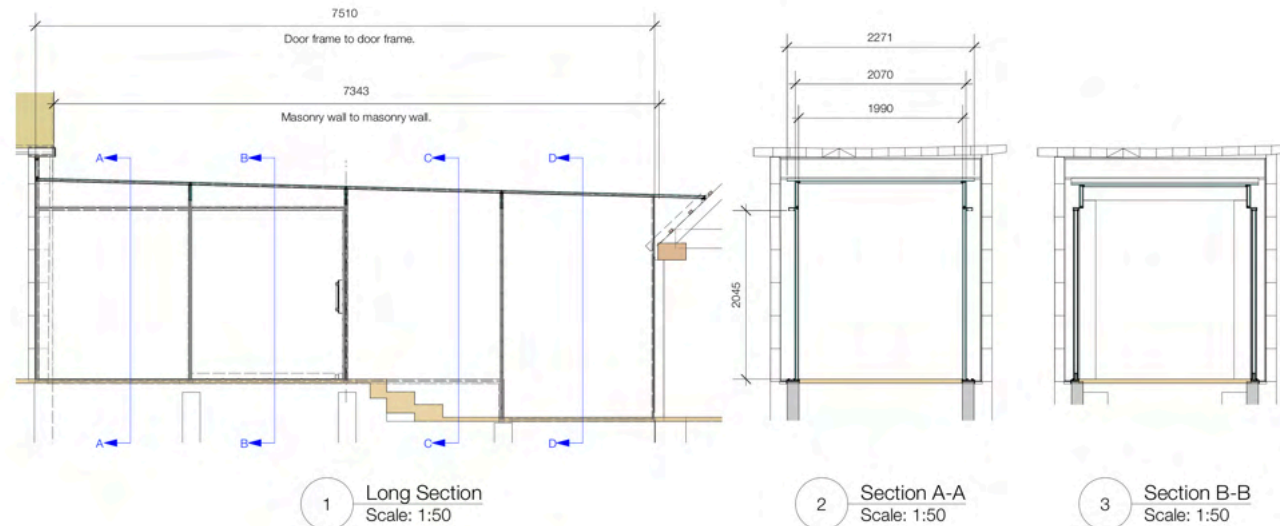
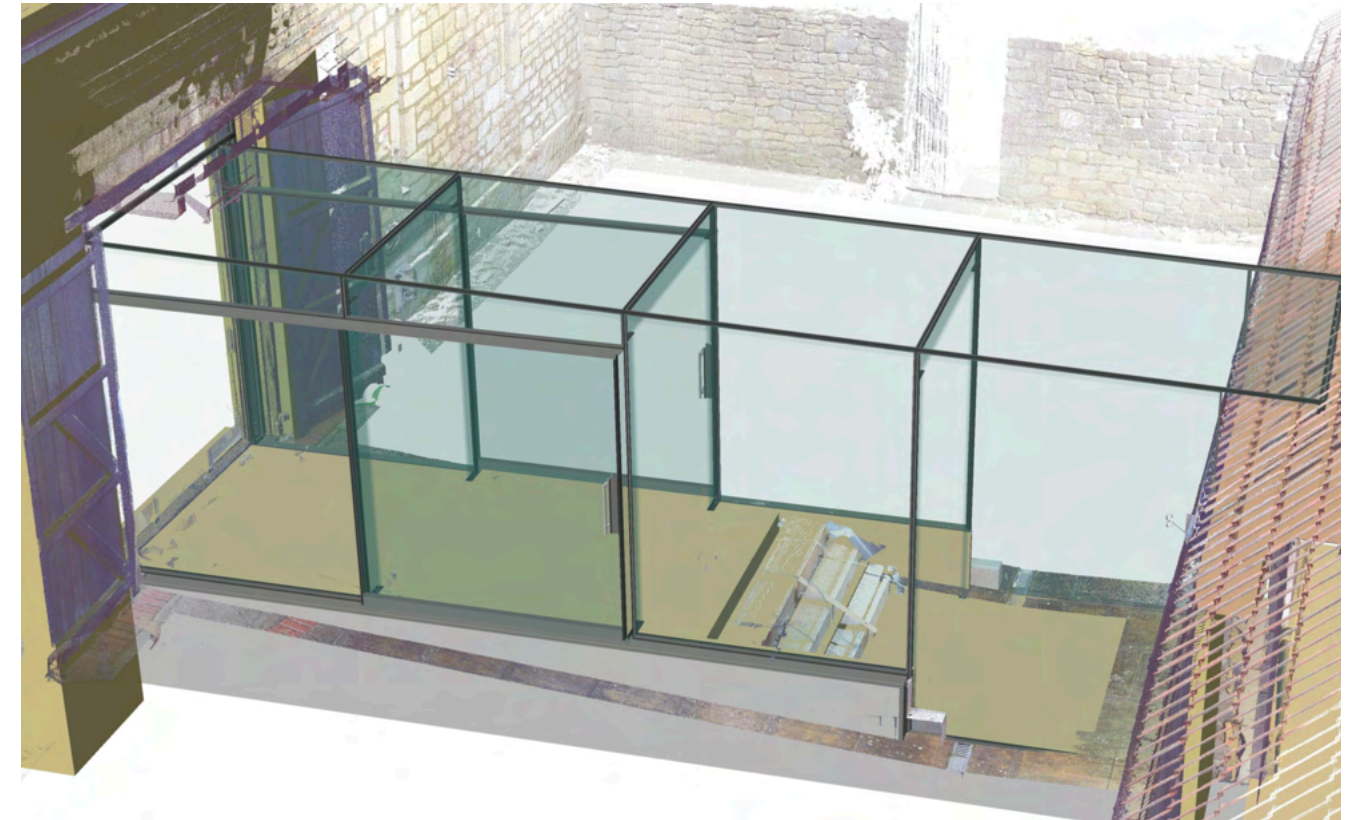
Using SGP interlayer which increases the structural integrity of glass we were able to support the edge of the treads in the glass wall allowing each tread to span 1680mm fixed throw with point load fixings no bigger than a twenty pence piece. Lights were incorporated into sand blasted panels changing at different times of the day to reflect the mood.

Glasspace can design, manufacture, and install solutions for unique projects, working closely with designers and Architects.



Designers

GlasSpace Design is home to a team of highly experienced and talented and multi-disciplined designers. We specialise in providing an end-to-end, high quality structural glass design solutions, encompassing all aspects of the project. We are passionate about what we do, ensuring we provide you the absolute best results. With knowledge and expertise across a breadth of services, we deliver your solution within budget and to the highest standards. Our philosophy is simple – achieve the most suitable design solution possible, to meet your brief and provide you with that perfect solution that creates a sustainable lasting space.



What we do

- Attend site for meetings, design workshops, surveys
- Produce initial 3D modelled design concepts and renderings
- Engage with structural engineers when necessary
- Produce part, assembly, fabrication and construction issue drawings
- Produce materials, assembly, loading, and bolt lists
- Procurement
- Project Management
- Quality control
- O&M manuals

Infiniti Finline Sliding doors

Create your space.

A GlasSpace door solution enabled the client to create a space without boundaries. Our structural glass sliding doors can be integrated into projects giving a seamless transition from inside to out. Fine lines provided a smooth- running glass solution with 17mm sight lines achieving uninterrupted views. This solution included a fully motorised system allowing seamless glass walls to disappear with ease of motion.

Applications

Our sliding doors are widely used but not limited to the residential/light commercial, retail and leisure markets. We also successfully design and build structural glazing solutions across all sectors providing innovation and dedicated project management services.

Sliding Doors

We can provide single and multi-sliding doors with outer frames that are individually extruded in sections.

These sections are coupled together to make endless sliding and folding solutions.

We achieve the sliding movement of our doors through the uniquely designed double rolling



stainless steel wheels, providing the largest smoothest doors on the market.

The doors are locked internally through a dead bolt system (7 pin anti bump euro cylinders can be fitted as extra).

Multi locking stations can be fitted as extra allowing extra ventilation.





Aluminium Extrusions

GlasSpace aluminium extrusions are all finished with polyester powder coatings meeting BS EN12206 Part 1. Optional finishes include anodising and marine grade PPC finishes with specified gloss levels and colours.

Structural Parameters

Unlike other door systems, we can push the limits of structural capabilities. Full structural calculations are available on request.

Sliding Solutions

Max height 4M
Max width 3M
Multiple combinations are available as well as fully automated sliding systems.

This Unique Tested System Allows Endless Solutions

- 17mm sight lines between sliding doors
 - Fully weather tested system
 - Double and triple glazing solutions - 1.1-0.8w/m2.K
- Acoustic insulation 30-35 Db

Guarantees

A 5-year parts and labour guarantee is offered on final payment

Services

- Project Management
- Detailed Quotation
- Design Consultation
- Full Sight Survey
- Production Drawings
- Structural Calculations
- Manufacture
- Installation

Sliding Door Glazing

50mm fixed and sliding sections incorporating low-e toughened glass provides an extremely thermal efficient glazed door solution.

Structural Fixed Glazing

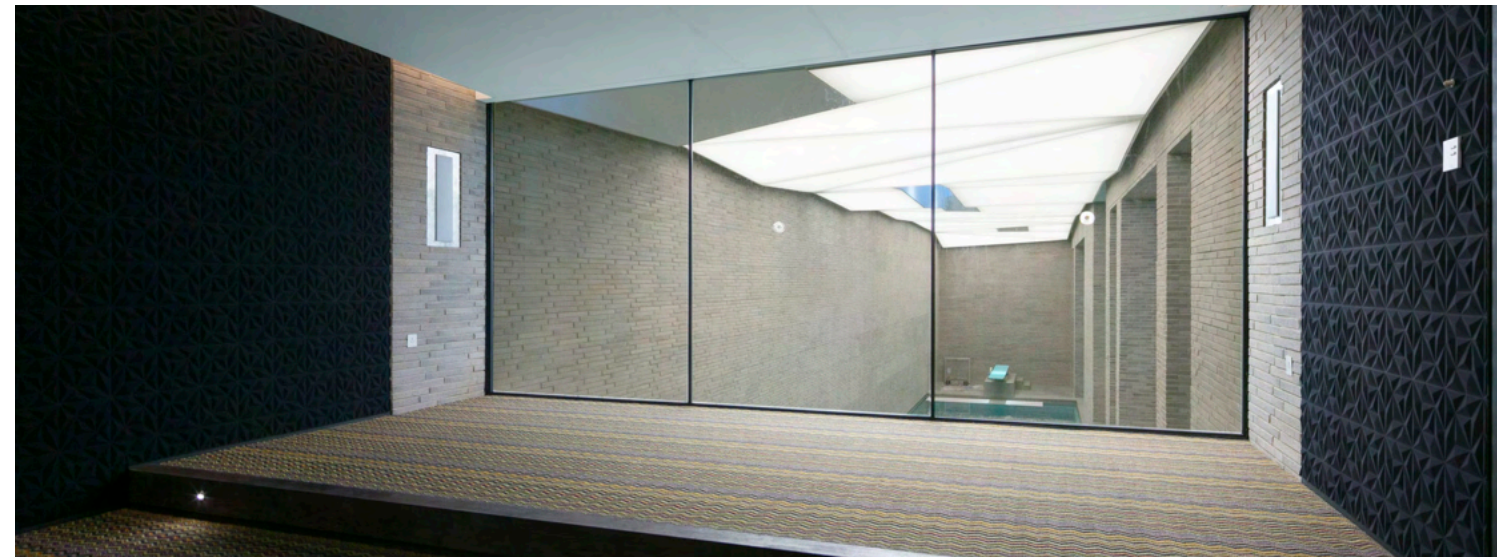
50mm fixed and sliding sections incorporating low-e toughened glass provides an extremely thermally efficient glazed door solution.

Roof Glazing

Calculated to achieve the highest standard of thermal efficiency and structural integrity.

Cavities of 34mm allow us to compensate for defections caused by the self-weight of the glass.

An argon filling allows us to increase thermal performance.





Contact us

London Office
0207 118 0448

Bristol Office
0117 259 1122

Email
info@glasspace.com